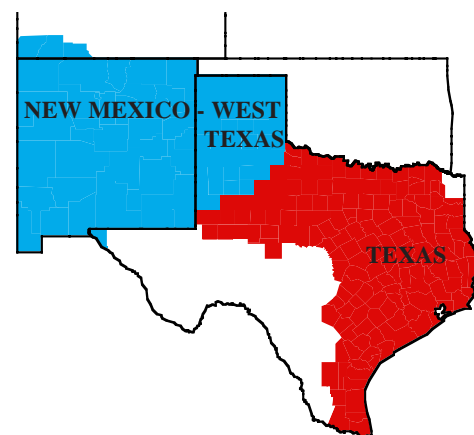


THE MARKET ADMINISTRATOR'S *REPORT*



TEXAS MARKETING AREA NEW MEXICO - WEST TEXAS MARKETING AREA

RICHARD FLEMING, MARKET ADMINISTRATOR
P.O. BOX 110939, CARROLLTON, TEXAS 75011-0939
(214) 245-6060 FAX(214) 245-3211



VOLUME XXI, NO. 4

APRIL 1995

MARKET SUMMARIES FOR MARCH

The March Class III price increased 10 cents from the previous month to \$11.89. The Class II price for March of \$12.20 per hundredweight increased 85 cents from \$11.35 in February. March's Class III-A price increased 10 cents from February's level to \$10.22.

Texas: Producers who delivered milk to handlers located in Zones 1 and 2 of the Texas Milk Market Order received \$12.93 per hundredweight for deliveries of milk containing 3.5% butterfat. The March price was up 1 cent from February.

Producers delivered a total of 585,526,871 pounds of milk during March. On a daily basis this represents a decrease of 2.10 percent from the producer receipts level in February but it represents an increase of .80 percent when compared to the producer receipts level of March 1994.

Producer milk classified as Class I during March amounted to 47.24 percent of total producer receipts. This figure is up from 46.63 percent in February but it is down slightly from 47.54 percent in March 1994. The average butterfat test of producer milk pooled during March 1995 was 3.582 percent.

New Mexico - West Texas: Producers who delivered milk to handlers located in Zone 1 of the New Mexico - West Texas Milk Market Order received \$12.07 per hundredweight for deliveries of milk containing 3.5% butterfat. The March price was up 2 cents from February.

Producers delivered a total of 186,879,259 pounds of milk during March. On a daily basis this represents an increase of 18.04 percent from the producer receipts level in February and it represents an increase of 2.68 percent when compared to the producer receipts level of March 1994.

Producer milk classified as Class I during March amounted to 33.54 percent of total producer receipts. This figure is down from 37.71 percent in February but it is up from 32.20 percent in March 1994. The average butterfat test of producer milk pooled during March 1995 was 3.647 percent.

SOUTHWEST DAIRY FIELD DAY SET FOR MAY

The fourth annual Southwest Dairy Field Day will be held Thursday, May 11 at Dan and Janet Martin's dairy located in the Shirley Community south of Sulphur Springs just off Highway 19.

Registration will begin at 8 a.m. The welcoming address will begin at 9 a.m. with concurrent sessions beginning at 9:30 a.m. The concurrent sessions are scheduled in a manner that will allow all field day participants to view all sessions plus a TMR mix-off if desired. A sponsored lunch of hamburgers and baked beans will be provided courtesy of the commercial exhibitors.

If there are any questions, call the Hopkins County Extension office at (903) 885 - 3443.

1995 DEIP BID ACCEPTANCE SUMMARY

THROUGH MARCH 31, 1995 WITH CHANGES FROM PREVIOUS WEEK

NONFAT DRY MILK- CHANGE	88,430 MT (194,952,778 LBS.) +613 MT (1,351,420 LBS.)
WHOLE MILK POWDER- CHANGE	11,500 MT (25,352,900 LBS.) +65 MT (143,299 LBS.)
BUTTER/BUTTEROIL- CHANGE	16,199 MT (35,712,315 LBS.) +19 MT (41,887 LBS.)
CHEESE-	305 MT (672,403 LBS.)

FINAL DECISION MADE ON M-W PRICE RELACEMENT

On April 6, 1995, Patricia Jensen, Acting Assistant Secretary, Marketing and Inspection Service, signed the final decision on the replacement for the Minnesota-Wisconsin (M-W) price series. This recommended decision adopts the base month M-W price updated with a butter/powder/cheese formula as the replacement for the M-W price series, which establishes minimum prices for milk under all Federal milk orders. The effective date is June 1, 1995. Therefore, the M-W price for May will be calculated using the new method and announced on June 5, 1995.

TRENDS IN DAILY CLASS I SALES

Monthly sales of Class I milk products were examined for the New Mexico - West Texas and Texas Orders for the years 1992 through 1994 with percentage change from previous years.

Class I milk sales in the New Mexico - West Texas marketing area have seen a fairly consistent growth pattern in sales, especially in the comparison of 1994 sales versus those of 1993. Class I sales increased the most in August posting an 8.64 percent gain over 1993 while April saw the smallest gain of only .96 percent. The 1993 and 1992 comparison saw more volatility in its sales ranging from a 11.69 percent decrease in January to a 8.54 percent increase in November.

NEW MEXICO - WEST TEXAS MARKET CLASS I IN AREA SALES

	<u>1994</u>	<u>1993</u>	<u>1992</u>	PERCENT CHANGE	
	MILLION POUNDS			94/93	93/92
J	54.0	52.1	59.0	3.65%	-11.69%
F	51.9	47.8	49.7	8.58%	-3.82%
M	54.3	53.0	51.0	2.45%	3.92%
A	52.8	52.3	52.0	0.96%	0.58%
M	51.1	49.7	51.0	2.82%	-2.55%
J	49.7	48.3	47.7	2.90%	1.26%
J	51.5	50.2	52.0	2.59%	-3.46%
A	56.6	52.1	50.1	8.64%	3.99%
S	55.8	53.0	52.9	5.28%	0.19%
O	56.2	54.7	54.5	2.74%	0.37%
N	55.0	53.4	49.2	3.00%	8.54%
D	54.3	52.8	51.3	2.84%	2.92%

Class I milk sales in the Texas marketing area have seen many more ups and downs. Class I sales

increased the most in August posting a 3.38 percent gain over 1993 while July saw a decrease of 3.10 percent. The 1993 and 1992 comparison showed its sales ranging from a 5.32 percent increase in November to a 1.99 percent decrease in February.

TEXAS MARKET CLASS I IN AREA SALES

	<u>1994</u>	<u>1993</u>	<u>1992</u>	PERCENT CHANGE	
	MILLION POUNDS			94/93	93/92
J	268.2	265.6	270.0	0.98%	-1.63%
F	247.5	241.3	246.2	2.57%	-1.99%
M	268.3	270.1	257.3	-0.67%	4.97%
A	257.7	259.0	256.5	-0.50%	0.97%
M	256.6	255.3	254.5	0.51%	0.31%
J	244.9	238.8	240.5	2.55%	-0.71%
J	244.2	252.0	250.1	-3.10%	0.76%
A	272.2	263.3	258.6	3.38%	1.82%
S	269.5	265.2	258.6	1.62%	2.55%
O	267.0	269.9	270.9	-1.07%	-0.37%
N	266.3	267.1	253.6	-0.52%	5.32%
D	265.7	263.0	255.6	1.03%	2.90%

CERTAIN ORDER PROVISIONS SUSPENDED

On March 27, 1995 Patricia Jensen, Acting Assistant Secretary, Marketing and Inspection Service, signed an order which suspends certain pooling provisions of the Texas Federal Order No. 126. This action continues, for the months of March 1, 1995, through July 31, 1995, a suspension removes the diversion limitation applicable to cooperative associations. The suspension of this provision, was requested by Associated Milk Producers, Inc., a cooperative association that represents a substantial proportion of the producers who supply milk to the market. The action was necessary to give cooperative associations the flexibility to dispose of the market's increasing milk supplies without engaging in uneconomical and inefficient movements of milk.

CHANGE IN RELATIONSHIP OF BUTTERFAT VALUE AS A PERCENT OF THE TOTAL BASIC HUNDREDWEIGHT PRICE OF MILK FROM 1960 THROUGH 1994 1/

<u>YEAR</u>	<u>B.F. VALUE AS A % OF BASIC CWT. PRICE</u>
1960	83.3
1970	63.2
1980	50.2
1990	34.3
1994	21.5

1/ Used month of September for years 1955-1994, calculated @ 3.5% B.F.

TOP TEN TEXAS COUNTIES a/ – MARCH 1995

<u>County</u>	<u>Number of Producers</u>	<u>Pounds</u>	<u>% Change From 1994</u>	<u>County</u>	<u>Number of Producers</u>	<u>Pounds</u>	<u>% Change From 1994</u>
1. Erath	201	124,787,014	-1.05	7. Archer	66	19,478,413	+2.35
2. Hopkins	415	84,932,317	-3.69	8. Cherokee	46	18,754,787	-3.07
3. Comanche	55	35,478,241	+3.18	9. Hamilton	43	15,179,779	+24.70
4. Johnson	67	21,756,305	-3.20	10. Franklin	61	12,732,181	-4.16
5. Wood	99	21,494,904	+5.59	Ten County Total	1,062	374,512,364	-.45 b/
6. El Paso	9	19,918,423	+5.64	<u>Other Counties Total</u>	<u>835</u>	<u>202,936,858</u>	<u>-5.33</u>
				Texas Total	1,897	577,449,222	-2.22

a/ Includes all known Grade "A" milk produced on farms located in Texas.

b/ Compared to top ten counties for the month in the previous year.

Minimum Prices at 3.5%, for Federal Orders 126 and 138 (Zone 1) Formula Prices (3.5%) and Price Quotations

	Class I a/		Class II	Class III	Class III-A	Uniform a/		B F Diff.	Grade A	Block	Spray
	126	138				Butter	Cheese		Powder		
Month	----- Dollars Per Hundred Wt. -----							¢/Point	-----Cents Per Pound-----		
February 1994	15.67	14.86	12.26	12.41	10.23	13.80	12.59	5.2	63.29	130.49	109.89
March	15.57	14.76	12.61	12.77	10.32	13.64	12.59	5.3	65.00	136.23	110.47
April	15.57	14.76	13.19	12.99	10.34	13.68	12.64	5.3	64.93	139.28	110.76
May	15.93	15.12	13.88	11.51	10.24	13.59	12.47	5.6	63.90	124.31	108.47
June	16.15	15.34	12.18	11.25	10.09	13.67	12.53	5.8	64.63	119.14	106.06
July	14.67	13.86	10.35	11.41	10.13	12.60	11.92	6.0	66.94	125.53	105.62
August	14.41	13.60	11.84	11.73	10.38	13.15	12.18	6.5	71.00	127.85	106.53
September	14.57	13.76	12.95	12.04	10.35	13.47	12.71	6.4	71.00	131.39	106.59
October	14.89	14.08	12.15	12.29	10.36	13.47	12.71	6.3	71.00	132.69	107.04
November	15.20	14.39	12.53	11.86	10.40	13.60	12.74	6.4	71.00	126.56	107.10
December	15.45	14.64	12.24	11.38	10.17	13.40	12.36	5.8	65.52	120.91	106.86
Averages 1994 b/	15.33	14.52	12.45	12.00	10.27	13.51	12.54	5.8	66.77	128.70	107.93
January 1995	15.02	14.21	11.02	11.35	10.06	13.03	12.09	5.5	63.00	122.20	106.71
February	14.54	13.73	11.35	11.79	10.12	12.92	12.05	5.6	65.04	127.80	107.11
March	14.51	13.70	12.20	11.89	10.22	12.93	12.07	5.7	66.00	129.00	107.77
April	14.95	14.14	12.09								
May	15.05	14.24	12.19								

a/ Subject to zone and location adjustments. b/ Simple averages

TOP NEW MEXICO COUNTIES a/ – MARCH 1995

<u>County</u>	<u>Number of Producers</u>	<u>Pounds</u>	<u>% Change From 1994</u>	<u>County</u>	<u>Number of Producers</u>	<u>Pounds</u>	<u>% Change From 1994</u>
1. Chaves	40	120,773,769	+16.03	7. Valencia	13	11,126,846	+4.26
2. Dona Ana	24	61,099,042	+3.32	8. Bernalillo	13	9,925,366	-9.04
3. Roosevelt	27	37,931,643	+16.93	9. Socorro	9	5,942,841	+11.16
4. Curry	9	24,545,948	+32.95				
5. Eddy	5	17,933,251	+56.81	Nine County Total	146	306,231,879	+15.94
6. Lea	11	16,953,173	+45.58	<u>Other Counties Total</u>	<u>6</u>	<u>6,929,292</u>	<u>-37.16</u>
				New Mexico Total	152	313,161,171	+13.81

a/ All known Grade "A" milk produced on farms located in New Mexico.

b/ Compared to top counties for the month in the previous year.

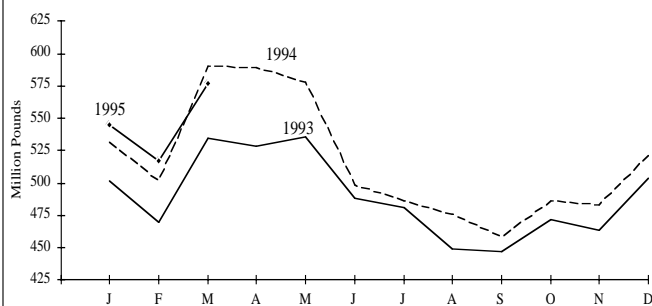
**POUNDS OF GRADE A MILK MARKETING BY
PRODUCERS LOCATED IN TEXAS BY MONTHS:
JANUARY 1993 THROUGH MARCH 1995, WITH PERCENTAGE COMPARISONS**

MONTH	1993 POUNDS	Number of Producers	1994 POUNDS	Number of Producers	1995 POUNDS	Number of Producers	PERCENT CHANGE 1994/93	1995/94
January	501,212,264	2,039	531,658,454	1,960	544,665,125	1,918	+6.07	+2.45
February	469,421,940	2,036	502,048,659	1,961	517,418,721	1,906	+6.95	+3.06
March	534,985,958	2,023	590,563,277	1,957	577,449,222	1,897	+10.39	-2.22
April	528,234,691	2,011	588,890,115	1,963			+11.48	
May	535,272,595	2,001	578,120,136	1,956			+8.00	
June	488,469,601	1,995	498,149,578	1,969			+1.98	
July	481,029,804	1,985	486,029,589	1,955			+1.04	
August	448,948,355	1,974	475,739,415	1,953			+5.97	
September	447,343,829	1,976	458,143,784	1,948			+2.41	
October	471,379,110	1,973	486,705,004	1,944			+3.25	
November	463,334,474	1,960	483,247,718	1,936			+4.30	
December	<u>503,356,197</u>	1,965	<u>521,399,526</u>	1,924			<u>+3.58</u>	
Years Total	5,872,988,818		6,200,845,698				+5.58	

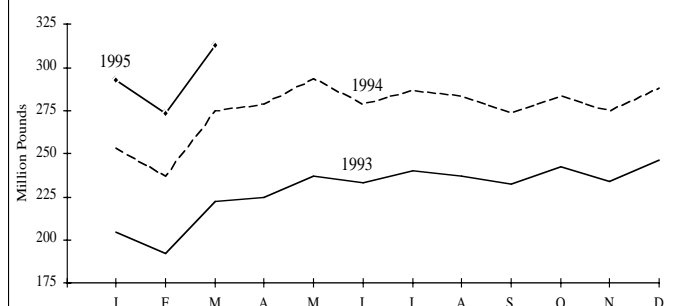
**POUNDS OF GRADE A MILK MARKETING BY
PRODUCERS LOCATED IN NEW MEXICO BY MONTHS:
JANUARY 1993 THROUGH MARCH 1995, WITH PERCENTAGE COMPARISONS**

MONTH	1993 POUNDS	Number of Producers	1994 POUNDS	Number of Producers	1995 POUNDS	Number of Producers	PERCENT CHANGE 1994/93	1995/94
January	204,707,796	139	253,218,001	147	293,138,194	156	+23.69	+15.76
February	192,335,243	140	237,211,785	148	273,530,768	155	+23.33	+15.31
March	222,849,739	140	275,165,335	145	313,161,171	152	+23.48	+13.81
April	224,429,460	141	278,682,898	149			+24.17	
May	237,473,164	143	293,746,832	149			+23.70	
June	232,947,016	142	278,940,461	150			+17.44	
July	240,574,076	145	286,825,906	149			+19.23	
August	237,512,245	146	283,870,810	150			+19.52	
September	232,833,573	146	273,359,295	151			+17.41	
October	242,443,358	148	283,588,806	152			+16.97	
November	234,445,273	149	275,359,100	152			+17.45	
December	<u>246,724,079</u>	148	<u>287,886,379</u>	154			<u>+16.68</u>	
Years Total	2,749,275,022		3,307,855,608				+20.32	

TEXAS GRADE A MILK MARKETINGS



NEW MEXICO GRADE A MILK MARKETINGS



TEXAS AND NEW MEXICO MARKET COMPONENT TEST

Month	<u>Butterfat</u>		<u>Protein</u>		<u>Lactose</u>		<u>S-N-F</u>		<u>SCC*</u>	
	<u>TX</u>	<u>NM</u>	<u>TX</u>	<u>NM</u>	<u>TX</u>	<u>NM</u>	<u>TX</u>	<u>NM</u>	<u>TX</u>	<u>NM</u>
February 1994	3.64	3.69	3.22	3.18	4.79	4.78	8.71	8.68	348	241
March	3.52	3.63	3.18	3.13	4.79	4.79	8.69	8.64	338	238
April	3.45	3.58	3.17	3.11	4.80	4.80	8.68	8.63	335	229
May	3.43	3.49	3.14	3.08	4.79	4.81	8.65	8.61	383	221
June	3.39	3.44	3.09	3.03	4.78	4.80	8.57	8.54	427	240
July	3.37	3.37	3.12	3.03	4.77	4.79	8.59	8.53	454	260
August	3.44	3.39	3.15	3.06	4.76	4.79	8.61	8.56	444	264
September	3.52	3.46	3.23	3.15	4.74	4.80	8.69	8.68	448	278
October	3.63	3.61	3.27	3.21	4.80	4.82	8.78	8.76	405	252
November	3.70	3.69	3.30	3.25	4.78	4.82	8.80	8.80	397	250
December	3.68	3.69	3.27	3.23	4.81	4.82	8.80	8.77	389	255
Average 1994	3.54	3.56	3.20	3.14	4.78	4.80	8.69	8.66	393	247
January 1995	3.69	3.70	3.25	3.21	4.79	4.81	8.75	8.75	385	272
February	3.60	3.64	3.21	3.17	4.83	4.86	8.76	8.74	364	253

* In thousands.

NEW MEXICO - WEST TEXAS MILK MARKET AT A GLANCE

	<u>REPORTED MAR. 1995</u>	<u>REPORTED FEB. 1995</u>	<u>REPORTED MAR. 1994</u>
TOTAL UTILIZATION			
CLASS I	63,850,626	55,053,235	58,958,395
CLASS II	13,546,811	8,840,109	12,922,785
CLASS III/III-A	132,357,053	102,295,805	112,970,765
CLOSING INVENTORY (CLASS I, II AND III)	9,773,345	12,747,836	9,748,218
TOTAL UTILIZATION	219,527,835	178,936,985	194,600,163
DAILY CLASS I UTILIZATION	2,059,698	1,966,187	1,901,884
MAR. -DAILY CLASS I COMPARED TO:		+4.76%	+8.30%
CLASS I YEAR TO DATE (IN THOUSANDS)	177,623	113,772	175,031
% CHANGE FROM PREVIOUS YEAR	+1.48%	-1.98%	-1.73%
TOTAL RECEIPTS			
PRODUCER RECEIPTS CLASSIFIED AS CLASS I	62,682,917	53,926,628	58,599,962
PRODUCER RECEIPTS CLASSIFIED AS CLASS II	12,018,642	7,836,245	11,624,488
PRODUCER RECEIPTS CLASSIFIED AS CLASS III/III-A	112,177,700	81,236,021	111,782,030
TOTAL PRODUCER RECEIPTS	186,879,259	142,998,894	182,006,480
OTHER SOURCE A/	19,900,740	24,639,916	4,030,658
OPENING INVENTORY	12,747,836	11,298,175	8,562,692
OVERAGE			333
TOTAL RECEIPTS	219,527,835	178,936,985	194,600,163
DAILY PRODUCER RECEIPTS	6,028,363	5,107,103	5,871,177
MAR. -DAILY PRODUCER RECEIPTS COMPARED TO:		+18.04%	+2.68%
PRODUCER RECEIPTS YEAR TO DATE (IN THOUSANDS)	474,708	287,829	517,344
% CHANGE FROM PREVIOUS YEAR	-8.24%	-14.17%	-3.25%
AVERAGE BUTTERFAT TEST OF PRODUCER RECEIPTS	3.647%	3.671%	3.630%
% PRODUCER MILK CLASSIFIED AS CLASS I	33.54%	37.71%	32.20%
NUMBER OF PRODUCERS	132	126	160
AVERAGE DAILY DELIVERY PER PRODUCER	45,669	40,533	36,695
NUMBER OF POOL HANDLERS	15	16	15

A/ INCLUDES MILK, SKIM MILK, CREAM AND SKIM EQUIVALENT OF CONCENTRATED SKIM MILK PRODUCTS

THE MARKET ADMINISTRATOR'S *REPORT*

TEXAS MARKETING AREA

NEW MEXICO - WEST TEXAS MARKETING AREA

RICHARD FLEMING, MARKET ADMINISTRATOR

P.O. BOX 110939, CARROLLTON, TEXAS 75011-0939

(214) 245-6060 FAX(214) 245-3211

BULK RATE
U.S. POSTAGE
PAID
Carrollton, TX
Permit No. 343

Address Corrections Requested

TEXAS MILK MARKET AT A GLANCE

	REPORTED <u>MAR. 1995</u>	REPORTED <u>FEB. 1995</u>	AUDITED <u>MAR. 1994</u>
TOTAL UTILIZATION			
CLASS I	277,409,251	253,818,831	278,872,874
CLASS II	97,649,085	92,587,753	91,788,724
CLASS III/III-A	233,948,689	207,033,798	235,258,151
CLOSING INVENTORY (CLASS I, II AND III)	27,570,812	33,993,348	31,830,494
TOTAL UTILIZATION	636,577,837	587,433,730	637,750,243
DAILY CLASS I UTILIZATION	8,948,686	9,064,958	8,995,899
MAR. -DAILY CLASS I COMPARED TO:		-1.28%	-.53%
CLASS I YEAR TO DATE (IN THOUSANDS)	813,518	536,109	812,739
% CHANGE FROM PREVIOUS YEAR	+1.10%	+4.42%	+2.68%
TOTAL RECEIPTS			
PRODUCER RECEIPTS CLASSIFIED AS CLASS I	276,624,489	251,895,840	276,127,492
PRODUCER RECEIPTS CLASSIFIED AS CLASS II	87,992,229	87,094,251	82,409,032
PRODUCER RECEIPTS CLASSIFIED AS CLASS III/III-A	220,910,153	201,219,037	222,321,861
TOTAL PRODUCER RECEIPTS	585,526,871	540,209,128	580,858,385
OTHER SOURCE A/	17,346,176	17,043,982	26,480,406
OPENING INVENTORY	33,222,525	29,296,991	30,401,965
OVERAGE	482,265	883,629	9,487
TOTAL RECEIPTS	636,577,837	587,433,730	637,750,243
DAILY PRODUCER RECEIPTS	18,887,964	19,293,183	18,737,367
MAR. -DAILY PRODUCER RECEIPTS COMPARED TO:		-2.10%	+8.0%
PRODUCER RECEIPTS YEAR TO DATE (IN THOUSANDS)	1,692,810	1,107,283	1,634,690
% CHANGE FROM PREVIOUS YEAR	+3.56%	5.07%	+7.05%
AVERAGE BUTTERFAT TEST OF PRODUCER RECEIPTS	3.582%	3.588%	3.524%
% PRODUCER MILK CLASSIFIED AS CLASS I	47.24%	46.63%	47.54%
NUMBER OF PRODUCERS	2,113	2,140	2,278
AVERAGE DAILY DELIVERY PER PRODUCER	8,939	9,016	8,225
NUMBER OF POOL HANDLERS	35	36	32

A/ INCLUDES MILK, SKIM MILK, CREAM AND SKIM EQUIVALENT OF CONCENTRATED SKIM MILK PRODUCTS